



KESTREL CLASS NEWS

A PEEK AT OUR WEEK



23/3/26 — 27/3/26

THIS WEEK'S LEARNING

Writing:

Developing paragraphs around a topic for our information text.

Spelling focus: the root 'nym' meaning name.

Reading:

Reading and interpreting a playscript.

Mathematics:

Identifying tenths on a place value chart and number line, dividing a 1-digit and 2-digit number by 10 and writing hundredths as decimals.

Science:

Investigating what happens to sound over a distance.

Dance:

Practising another traditional Country Dance: 'Bridge of Althone'.



CONTACT INFORMATION

Year 4 team:

year4@tatsfieldtl.co.uk

www.tatsfieldtl.co.uk

IMPORTANT DATES:

24/3/26 - Trumpet showcase to parents from 14:45

25/3/26 - Year 4 Open Morning for parents at 8:30am-8:45am

27/3/26 - PTA Easter Egg hunt

27/3/26 - End of term 4 at 2pm

WEEKLY SNAPSHOTS!!



We had a great visit to St Mary's church to learn about the communion with Rev. Debra.

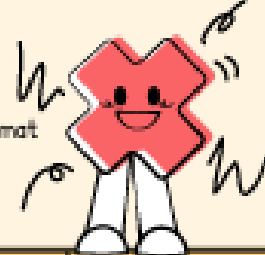
Multiplication Tables Check

2026
KS2
Year 4

A GUIDE FOR PARENTS

WHAT IS IT?

- Children answer multiplication questions up to 12×12 , with greater emphasis on the 6, 7, 8, 9 and 12 times tables, as these are generally the most difficult to recall
- The check is online and completed on screen
- It contains 25 questions, with 6 seconds to answer each one
- There is a 3-second pause between each question before the next one appears
- Before the check, children can answer 3 practice questions to become familiar with the format
- Each check usually takes less than 5 minutes per child
- There are multiple versions of the check – each question is generated randomly
- There is no official pass mark or threshold



WHO DOES IT?

- The Multiplication Tables Check is statutory for all Year 4 pupils in England
- Children do not need to re-sit the check if they do not achieve a high score
- Schools will share each child's result with parents or carers

WHY IS IT IMPORTANT?

- The purpose is to see whether children can fluently recall multiplication facts up to 12×12
- Secure times table knowledge helps children feel more confident in maths and supports later learning, including division, fractions and problem-solving
- The check helps schools identify children who may need extra support with times tables

WHEN IS IT?

- In 2026, schools must complete the check between Monday 1st June and Friday 12th June
- Additional time can be used from Monday 15th June to Friday 19th June for children who were absent or unable to complete the check during the main window

HOW TO HELP AT HOME

Practise Little and Often

Short sessions of 5-10 minutes work best.

Focus on Quick Recall

Children need to answer within a few seconds.

Practise All Tables

Especially 6, 7, 8, 9 and 12.

Use Games and Quizzes

To make practice fun.

Use Real-life Maths

Cooking, shopping and travel can all involve multiplication.